

Power Platform – bezpieczny rozwój aplikacji i nowe możliwości

Michał Wypych



Agenda

Introduction to Power Platform

What is an Agent and Copilot Studio?

Security

Demo

Q&A



Surging digital demand



1B

**new apps will be
built by 2028**

Microsoft Power Platform



Agents



Automations



Apps



Pages



BI



Power Fx



Managed
Environments



Dataverse



1400+
Connectors



AI Builder



45M

Monthly
active
users today

#1

Adopted
Low-Code
Platform

97%

Of Fortune 500
companies
use Power Platform

What is an agent?

Agents use AI to **automate and execute business processes**, working alongside or on behalf of a person, team, or organization.

Deploy to...



Microsoft 365
Copilot



Your applications

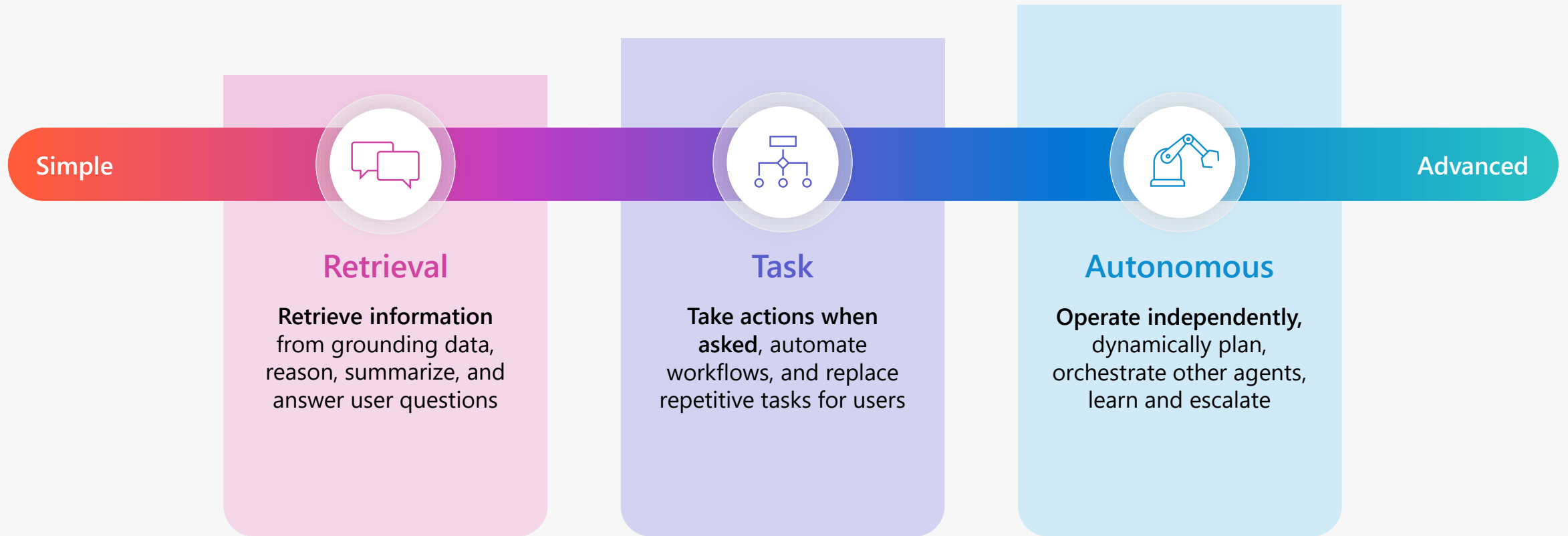


Your websites

What is an Agent?

Agent = LM + Planner + Memory + Tools / Skills

Spectrum of agents

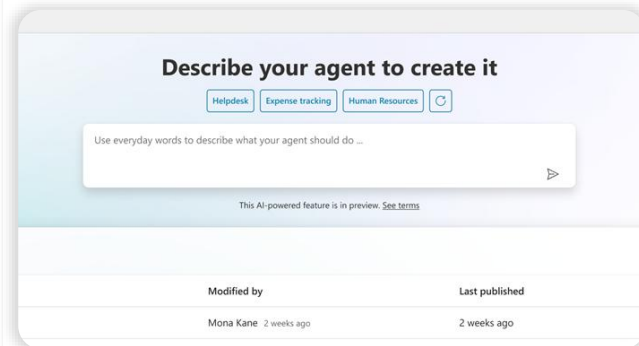


←..... Agents vary in levels of complexity and capabilities depending on your need→

Build the way you want

Users of all skill levels can create and test together

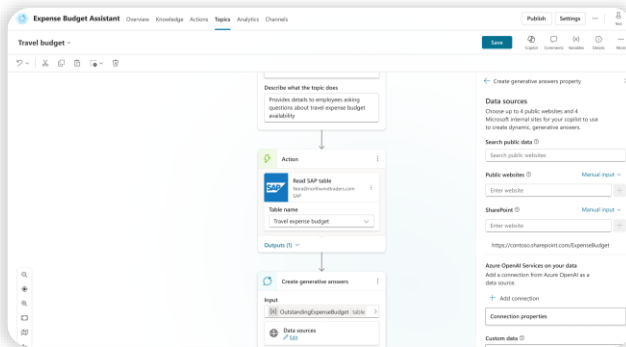
Natural language



Build conversationally

Build agents by engaging in a conversational, natural, human-like experience.

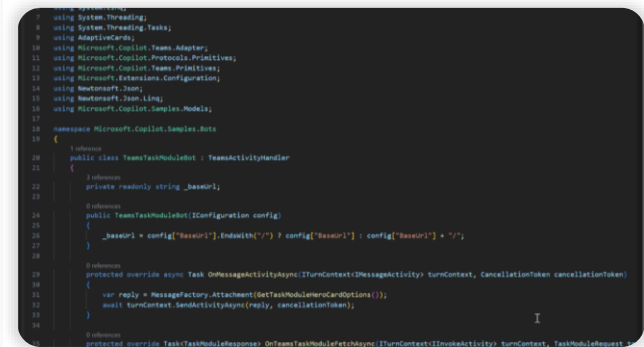
Visual canvas



Navigate a modern UX

Design your conversation by following the low code graphical interface.

Code



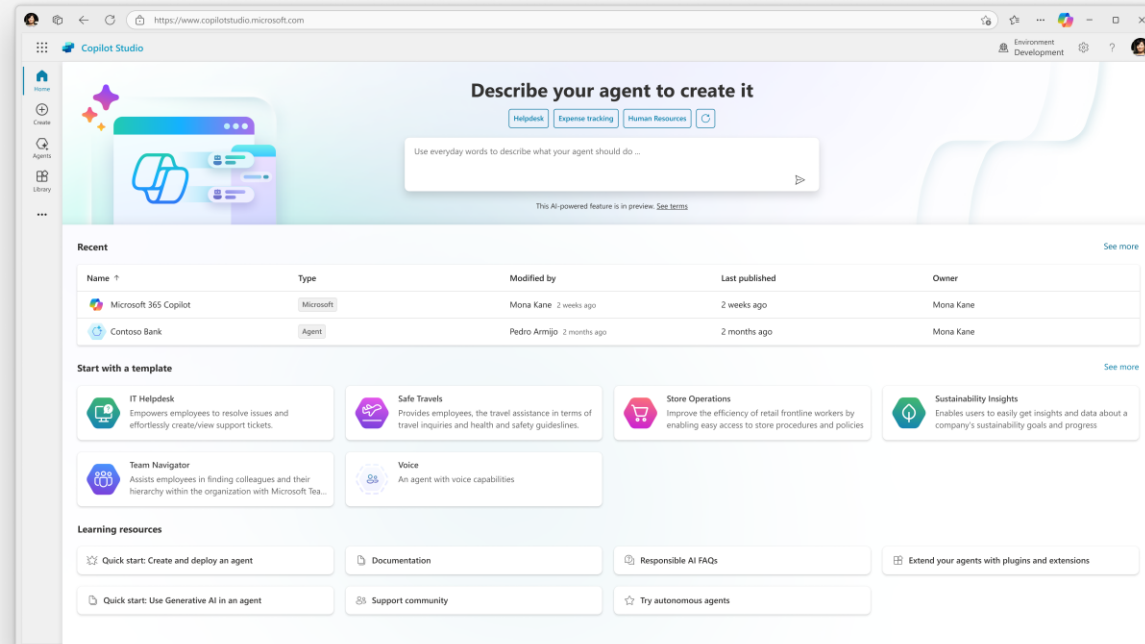
Microsoft 365 Agent SDK

Develop agents using advanced, flexible tools



Copilot Studio

Copilot Studio is a low code tool for **building agents** and **extending Microsoft 365 Copilot**.



- ✓ Meet your users where they already are
- ✓ Access everything in one place
- ✓ Automate your workflows
- ✓ Integrate with your external apps
- ✓ Connect to your data in Microsoft 365

What is important?

30%

Gartner, Inc.

Where is the risk of your AI project?

Gen AI risks that organizations are working to mitigate,¹ % respondents

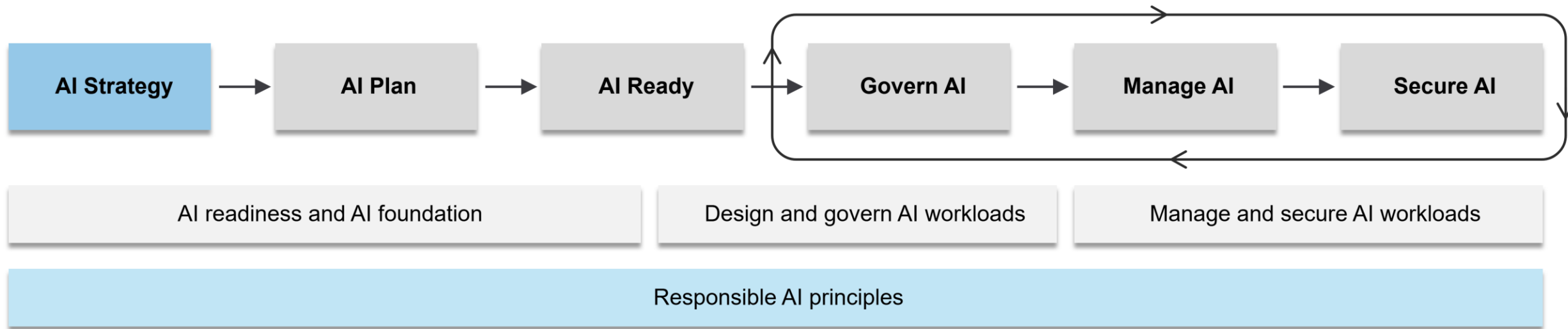


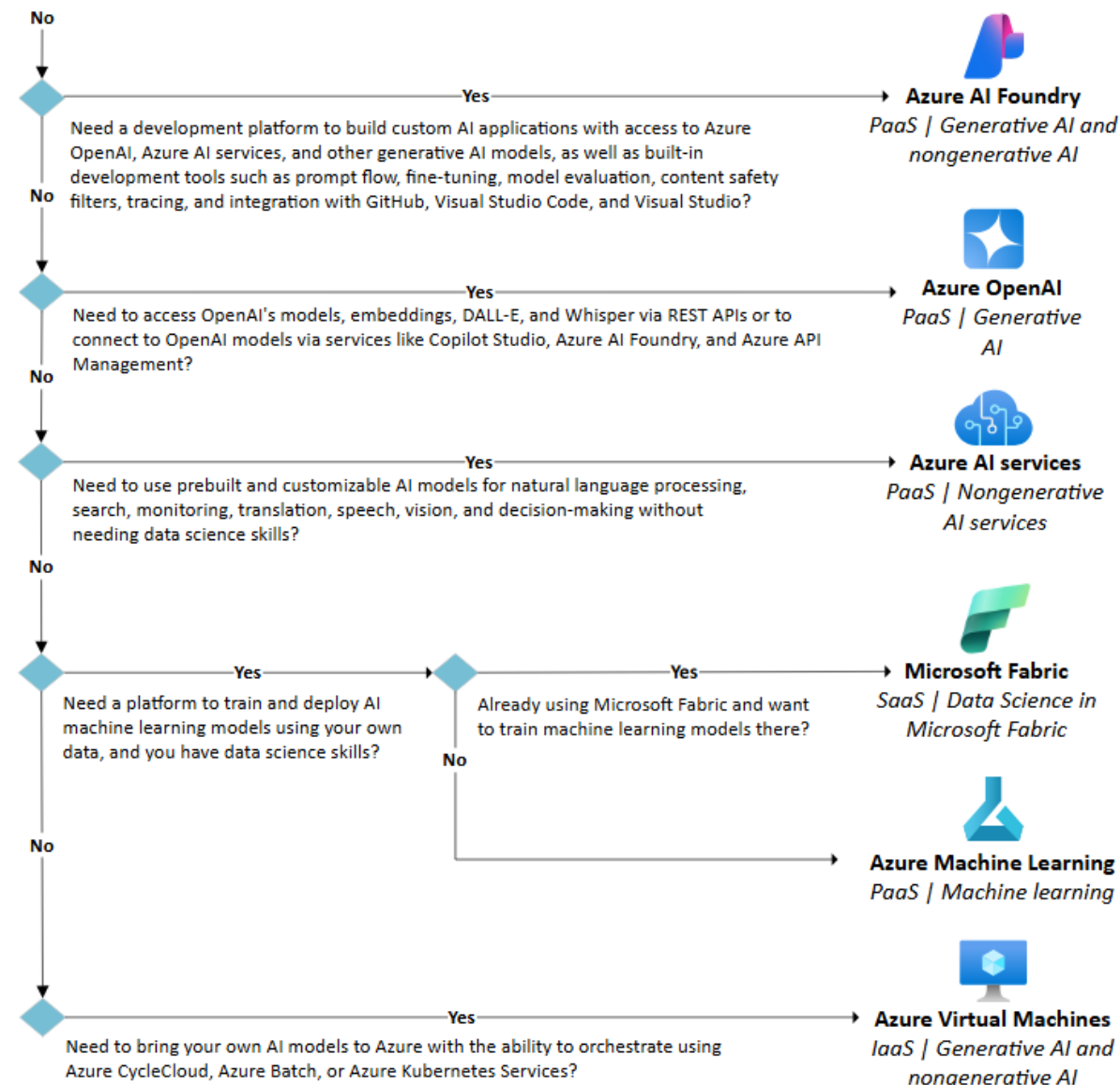
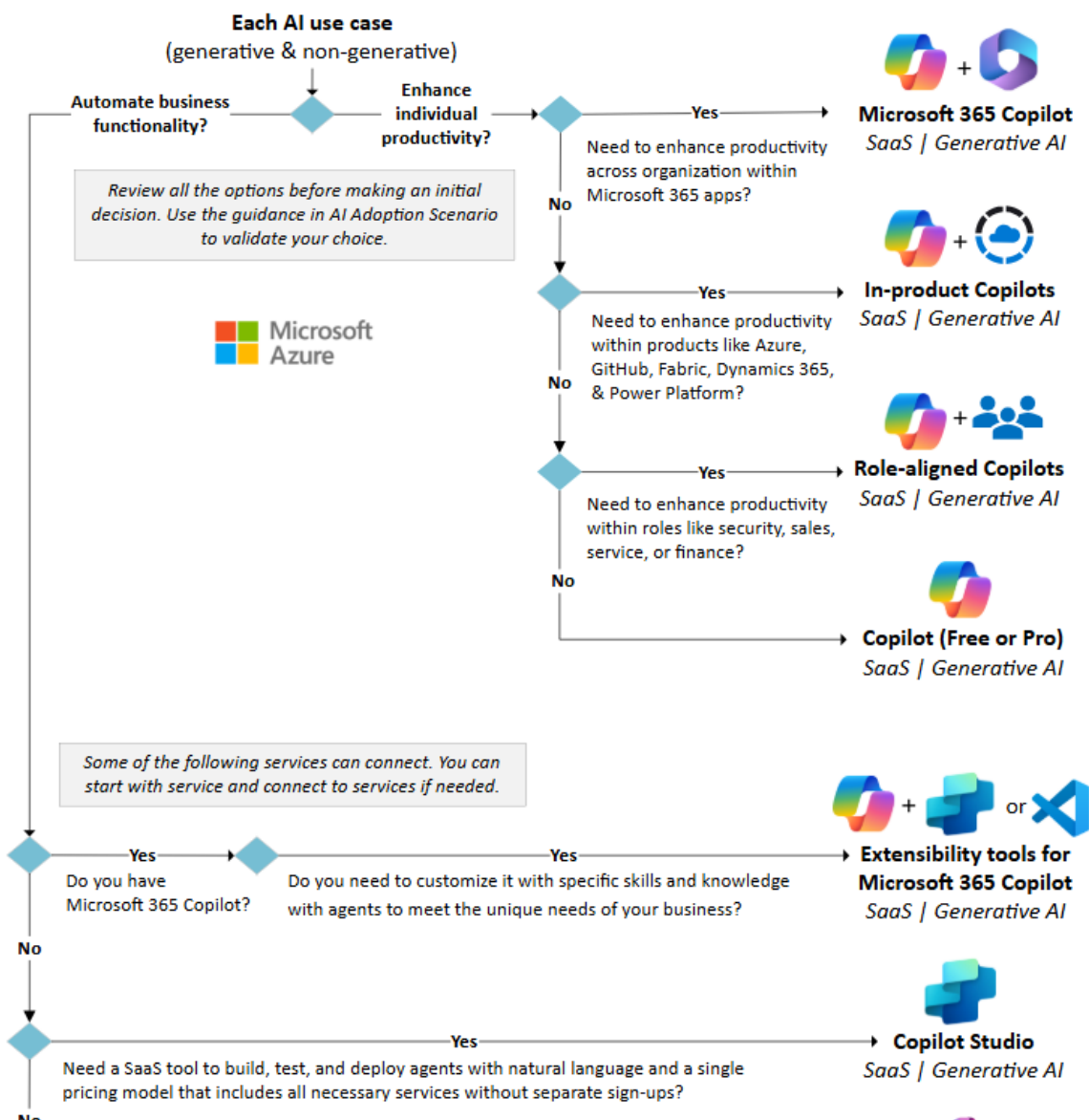
¹Question was asked only of respondents whose organizations have adopted AI in at least 1 function. Respondents who said "don't know/not applicable" are not shown. In 2023, n = 913; in 2024, n = 1,052.

Source: McKinsey Global Survey on AI, 1,363 participants at all levels of the organization, Feb 22–Mar 5, 2024

AI Strategy - Process to develop an AI strategy

- [AI Strategy - Process to develop an AI strategy - Cloud Adoption Framework | Microsoft Learn](#)





Security

Our enterprise AI safeguard

- Your data is your data
- Your data is not used to train or enrich foundation AI models
- Your data and AI models are protected at every step
- Our Customer Copyright Commitment

Does my Data leave EU boundary?

[Microsoft Cloud enables customers to keep all personal data within European Data Boundary - EU Policy Blog](#)

[Protecting the data of our commercial and public sector customers in the AI era - Microsoft On the Issues](#)



EU Data Boundary

[Microsoft EU Data Boundary Overview](#) | [Microsoft Trust Center](#)



Supplemental Terms

[Legal Docs](#) | [Microsoft Dynamics 365](#)



Data Movement

[Enable copilots and generative AI features - Power Platform](#) | [Microsoft Learn](#)

[Microsoft's Data Protection Addendum](#)



Privacy Statement

[Microsoft Privacy Statement – Microsoft privacy](#)



Intellectual Property

[Introducing the Microsoft Copilot Copyright Commitment](#)



Services Agreement

[Microsoft Services Agreement](#)

Copilot Studio Demo

Q&A

Thank you!